



4-STEP

Head lice

TREATMENT GUIDE



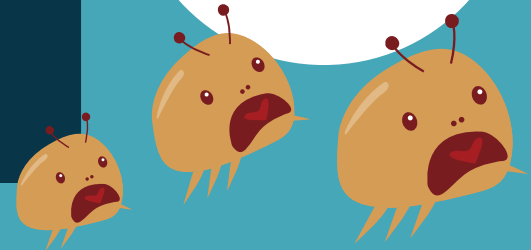


step 1

DETECTION

Check the hair for any signs of head lice, nymphs, eggs or red sores.

Use the V-Comb to check



The V-Comb's LED-illuminated capture filter compartment makes it easy to check for any signs of head lice.





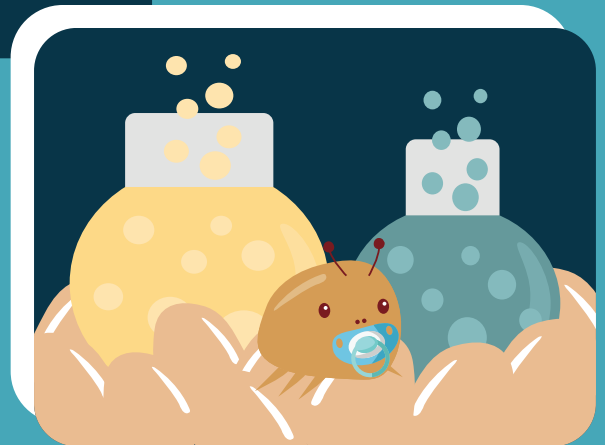
step 2

ELIMINATION

Use the V-Comb to get rid of adult head lice, nymphs and live eggs.

Comb daily for 1-3 days

Combing is still the recommended and most effective way to treat head lice infestations as lice have grown resistant to chemicals in products most commonly used to treat them.



✕ *step 3*

BREAKING THE CYCLE

Comb for possible missed eggs, newly hatched nymphs or new head lice.

*Comb on
day 7*

Head lice eggs stick close to the hair shaft with a superglue-like substance making them more difficult to extract. Thus, it is important to check for missed eggs or newly hatched nymphs before they start a new infestation.





step 4

PREVENTION

Check for any new lice that may have been picked up from others.

Use once a week if needed

Head lice do not fly nor jump, but spread through direct head-to-head contact. However, it only takes one head louse to start an infestation so it is important to regularly check for signs of lice.

